

BLE by example

Tomasz Grynfelder
@tgrynfelder



Polidea

BLE by example

- Core Location
 - iBeacons
- Core Bluetooth
 - BLE peripherals communication

Examples

- Estimote's Beacons
- Knoll's *r/evolution workplace*TM project with *Bounce by Knoll*TM app
- Texas Instruments' SensorTags
- MCE Jitter's Prototyping fun with TI's SensorTag Workshop

iBeacons

- What is inside?
- What have we faced?
- What have we delivered?

What is inside?

What is inside?

- Core Location
- Regions identification with:
 - proximity UUID
 - major
 - minor

What is inside?

- Registering:

```
CLBeaconRegion *region = [[CLBeaconRegion alloc]
initWithProximityUUID:@"39EF98AA-3100-515B-842D-9E218FE143E5"
                    identifier:@"eu.tgrf.beacons"];

[locationManager startMonitoringForRegion:region];
```

What is inside?

- Getting location:

```
- (void)locationManager:(CLLocationManager *)manager
    didRangeBeacons:(NSArray *)beacons
        inRegion:(CLBeaconRegion *)region {
    if (CLProximityNear == [beacons.firstObject proximity]) {
        // we're in!
    }
}
```


What have we faced?

What have we faced?

- Provide an app for the NeoCon conference for Knoll, utilising iBeacon technology
- Contextual information, ready to be modified from backend
- Estimote Beacons surrounded by large number of people

What have we faced?

- NeoCon event, June 9th, 2014
- North America's largest design exposition and conference for commercial interiors
- attended by over 40,000 architecture and design professionals

What have we faced?

- Knoll's *r/evolution workplace*TM project
 - measuring office space utilisation
- *Bounce by Knoll*TM
 - a part of *r/evolution workplace*TM
 - contextual information
 - user location tracking

What have we faced?

- Polidea's office as a testing ground
 - testing in similar area
 - interoperating with other BLE devices
 - fewer people than on NeoCon

What have we faced?



What have we faced?

- Testing in the wild
 - even one person could be a problem
 - exit notification could be received after a long time
 - estimated number of Beacons will be different than used in practice

What have we faced?

- Testing in the wild
 - Proximity estimated correctly (almost) only in perfect conditions
 - Zones (far, near, immediate) as a good compromise
- Phantom notifications about being in range

What have we
delivered?

What have we delivered?

App Store > Business > Knoll, Inc



Free

★★★★★ (9)

Rating: 4+

© Knoll 2014

Bounce by Knoll™

Knoll, Inc >

Details Ratings and Reviews Related

iPhone Screenshots



Description

Bounce by Knoll™ invites you to discover Knoll. As you tour our showroom, location specific notifications offer context to what you are seeing, creating an interactive, multi-layered experience.

Bounce provides interactive information and notification based on a user's micro-location, while also monitoring, measuring and analyzing space utilization and the social dynamic of the office. The app employs a wireless, "beacon" technology that operates in tandem with smartphones to exchange data and information.

What have we delivered?

- Tricks and findings
 - Merging Beacons into groups with the same ID
 - Triggering actions after second or third “in range” notification
 - Placing Beacons over people’s heads

What have we delivered?

- Results:
 - <http://www.knoll.com/knollnewsdetail/revolution-workplace-knoll-at-neocon-2014>
 - <http://techcrunch.com/2014/06/17/estimote-knoll-partner-to-bring-ibeacons-into-office-space-planning/>
 - <https://itunes.apple.com/us/app/bounce-by-knoll/id882507990>



BLE peripheral

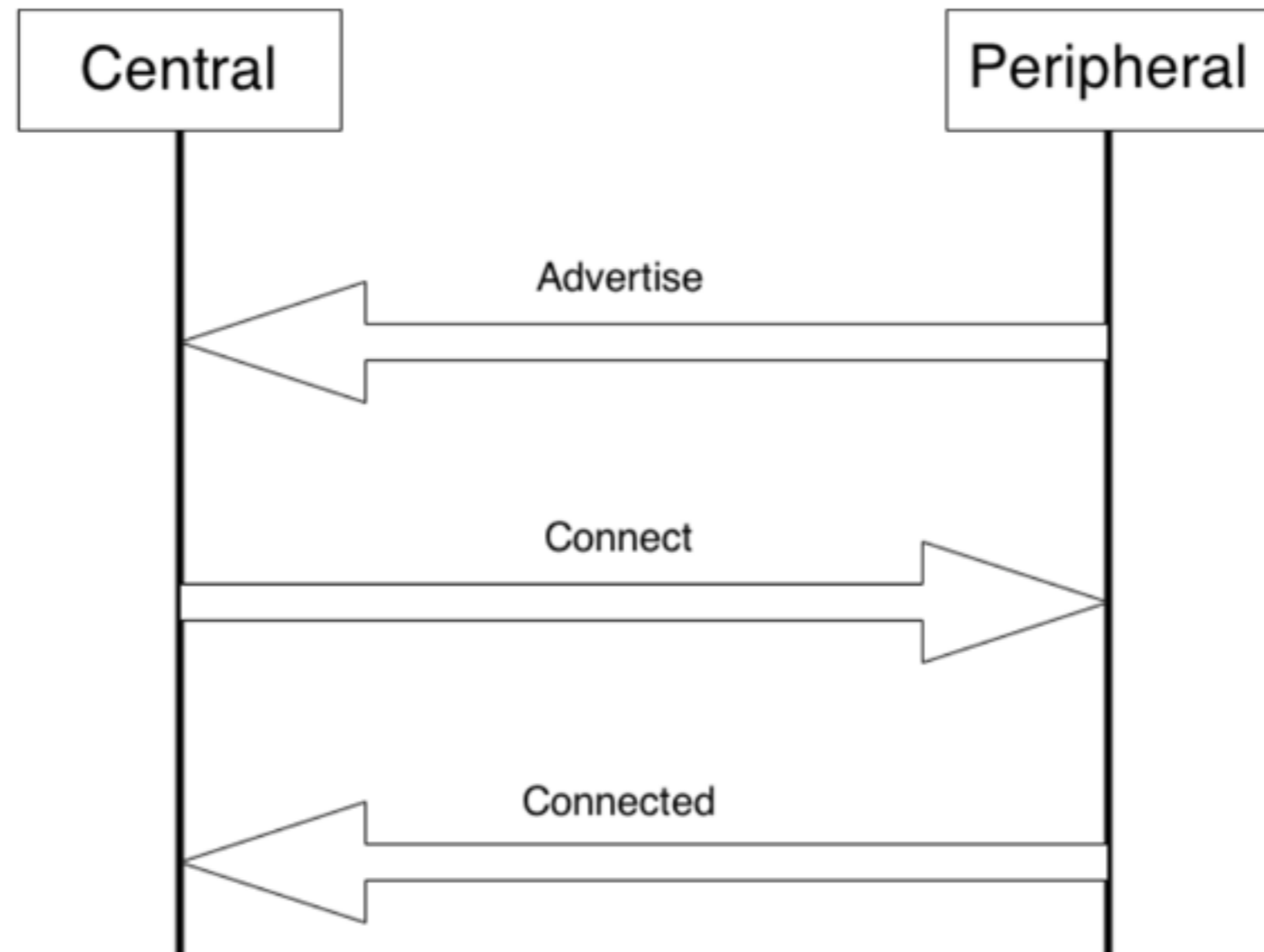
BLE peripheral

- What is inside?
- What have we faced?
- What have we delivered?
- How have we done it?

What is inside?

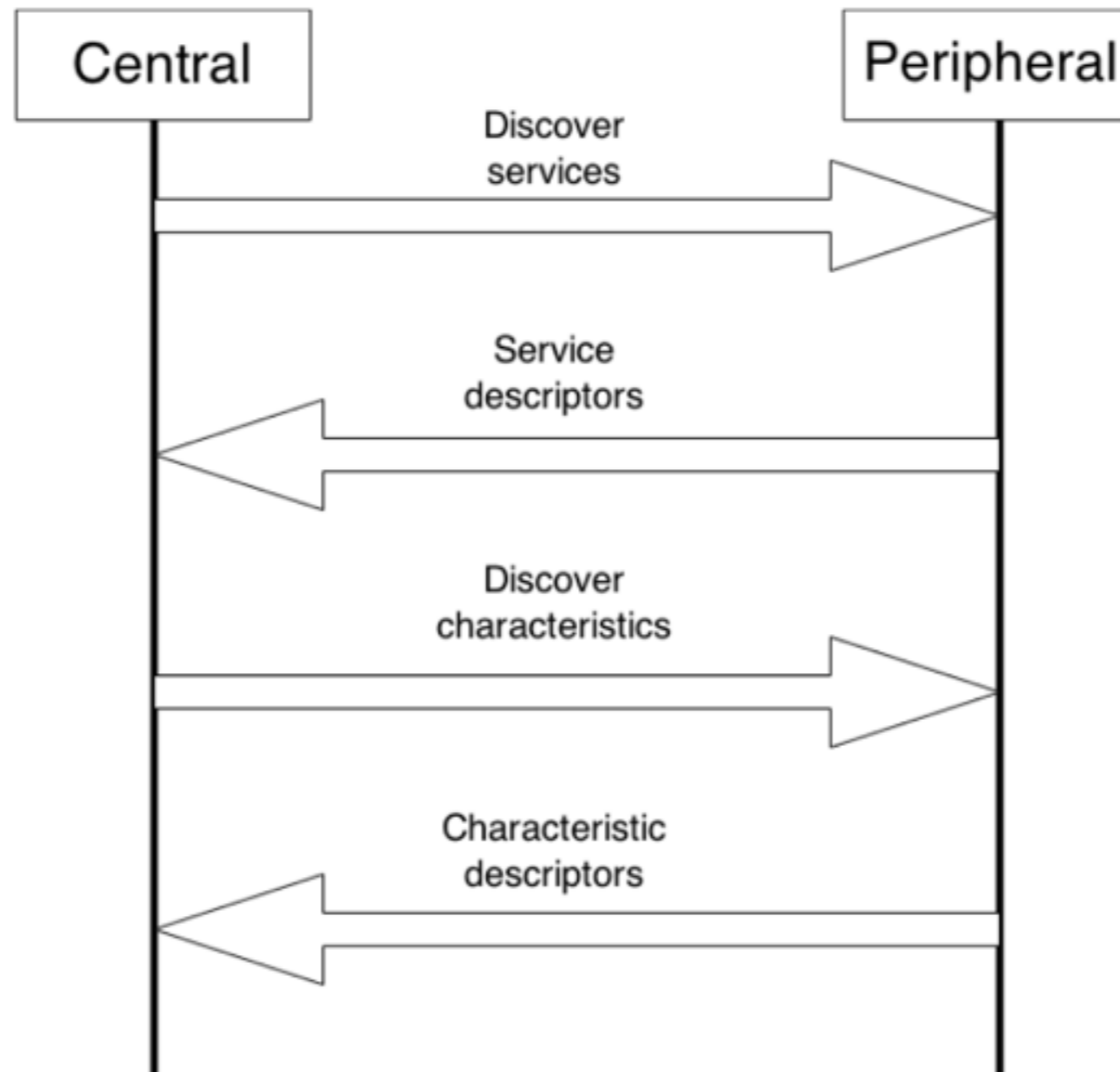
What is inside?

- BLE Stack - connecting



What is inside?

- BLE Stack - discovering



What is inside?

- Core Bluetooth
- iOS Bluetooth Stack
 - CBCentral
 - CBPeripheral

What is inside?

- CBCentral
 - scanning
 - establishing connection with peripheral
- CBPeripheral

What is inside?

- CBCentral
- CBPeripheral
 - discovering services and characteristics for them
 - reading and writing values to/from characteristics

What have we faced?

What have we faced?

- MCE Jitter's Prototyping fun with TI's SensorTag
 - over 40 people
 - developing their ideas into a working prototypes with TI ST
 - teaching basis of BLE and peripheral integration

What have we faced?



What have we
delivered?

What ~~have we~~ has
been delivered?

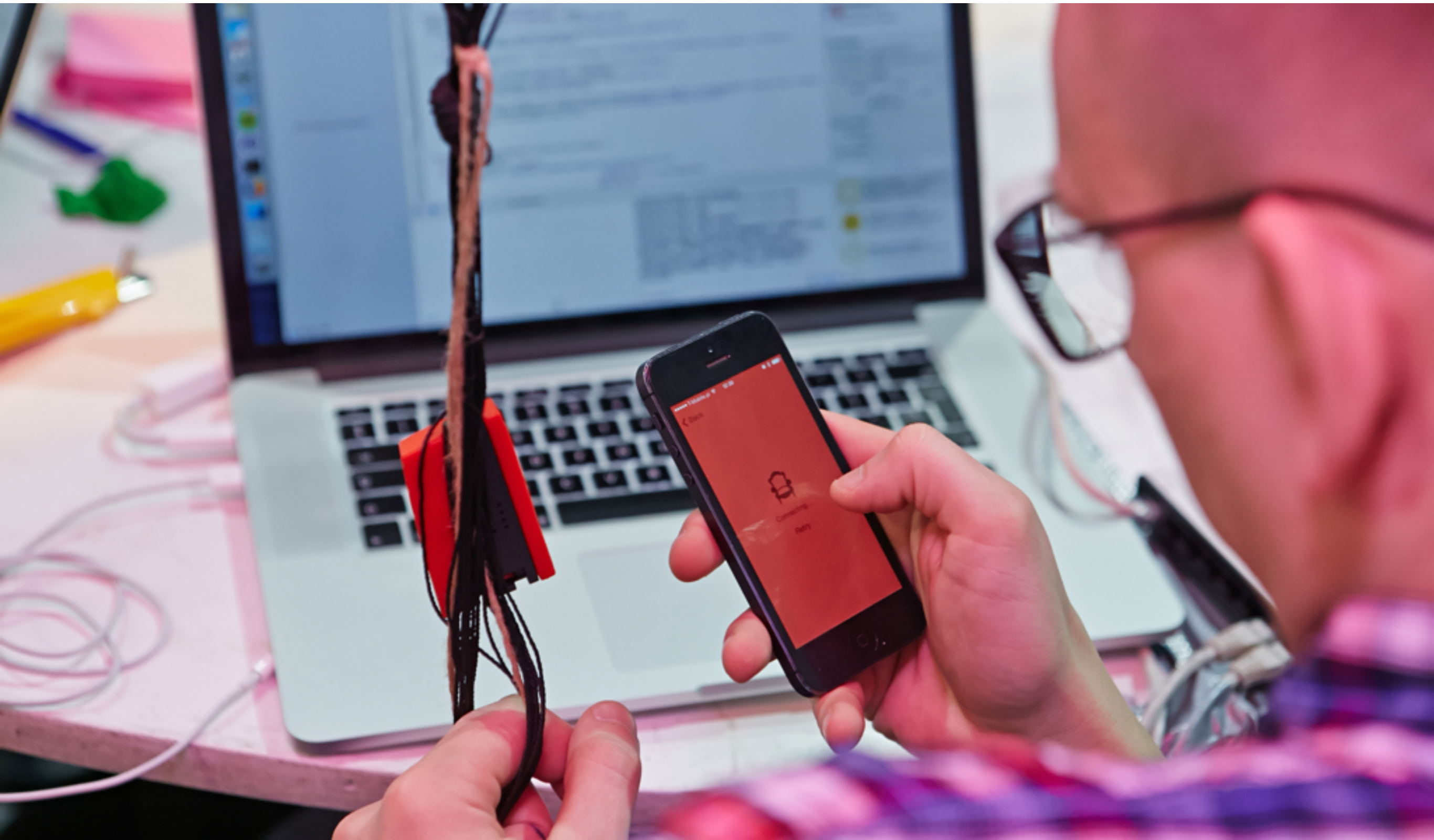
What has been delivered?



What has been delivered?



What has been delivered?



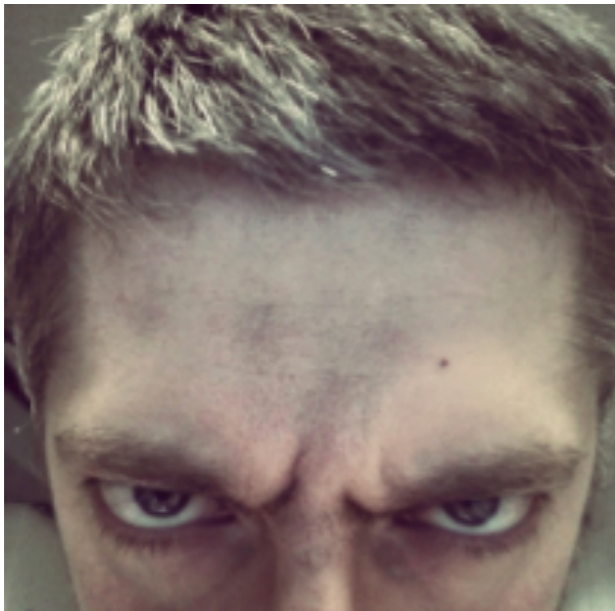
How have we done it?

How have we done it?

- Findings:
 - it's easy:
 - if you have tested it before
 - with app skeleton
 - batteries will run out of power just exactly during your show after over a year

How have we done it?

- With a great team!



Kudos

- Błażej Marcinkiewicz, @blazejmar
- Krzysiek Wróbel, @MrChrisWrobel
- Alek Piotrowski, @pelotasplus
- Przemek Pomaski

Tech details

Tech details

- <https://github.com/tgrf/TISensorTag>
- <https://developer.apple.com/ibeacon/Getting-Started-with-iBeacon.pdf>
- https://developer.apple.com/library/mac/documentation/NetworkingInternetWeb/Conceptual/CoreBluetooth_concepts/AboutCoreBluetooth/Introduction.html
- <http://www.raywenderlich.com/52080/introduction-core-bluetooth-building-heart-rate-monitor>

Q&A

Thanks!

@tgrynfelder